

your guide to Scorecard

Welcome to the Guide to the Environmental Defense Fund's Scorecard at www.scorecard.org.

This Guide will show you key sections of Scorecard and make it easier for you to organize a community meeting on toxic pollution.

Note: If you prefer to view this in a normal Acrobat window, hit the Escape key.



understanding the basics of Scorecard

Scorecard

Click on
a topic and
Go!

SCORECARD
What is it?



POLLUTION LOCATOR
Map pollution in your area

YOUR RIGHT TO KNOW
Toxics in your community



ADVANCED REPORTS
Toxics up close

ACCESSING SCORECARD
How do you get to Scorecard?



POLLUTION RANKING TOOL
How does your community compare?

ABOUT YOUR COMMUNITY
Find out about your local area



GET INVOLVED!
Help reduce pollution!

www.scorecard.org

back

quit

what is Scorecard?



Scorecard is an *Internet information service* that allows anyone in the U.S. to see major pollution sources and hazards, in sharp detail, *in his or her own community* using local street maps.

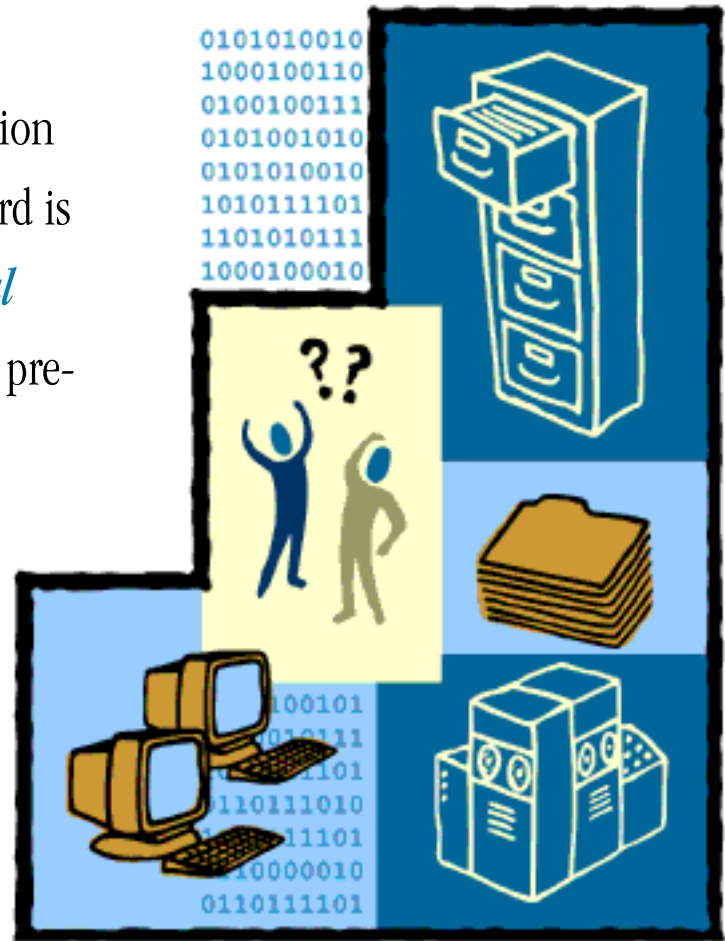


what is Scorecard?

Scorecard

We know how hard it is to get public information on pollution in your community, so Scorecard is set up to let you *find the facts about local pollution*, and what hazards that pollution presents, with just a few mouse clicks.

Scorecard lets you rank areas or individual facilities many different ways, so you can select the problem you care about, see where the highest health threats are, and who is responsible.



[back](#)

[home](#)

[quit](#)

[next](#)

what is Scorecard?

Scorecard

Scorecard cannot tell you if you are safe in your neighborhood, but it can tell you how to contact the people who might know—some local *community groups* in your area and the *facilities* themselves.

Once you find out about toxic pollution in your area, **TAKE ACTION!** Scorecard provides a variety of options.

[back](#)[home](#)[quit](#)[next](#)

your right to know:

Toxics Release Inventory

Scorecard

In 1986, an important *Right-to-Know* law changed the way we get information about toxins. The federal *Toxics Release Inventory*, or *TRI*, requires major industrial facilities* in the U.S. to report quantities of specific chemicals that they release into the air, water, and land. Scorecard's information on releases of toxic chemicals from industrial facilities comes from TRI.

* TRI only covers large facilities in certain industries and it does not cover all pollution sources. It also only requires reporting of the TRI set of chemicals.



[back](#)

[home](#)

[quit](#)

[next](#)

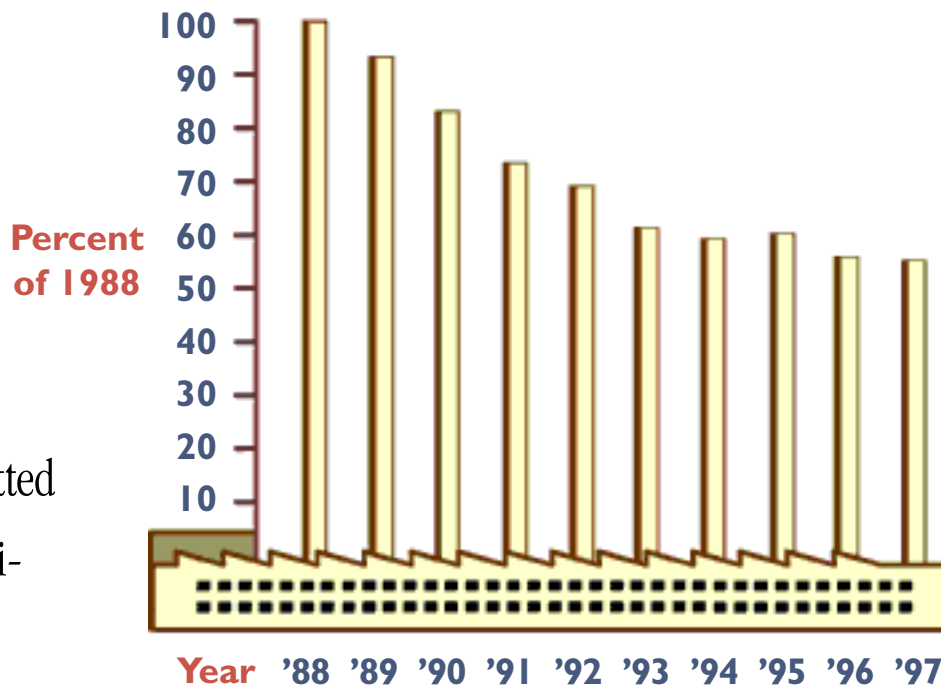
your right to know:

Toxics Release Inventory

Scorecard

These simple facts, made public, have had impressive power to change the behavior of industrial polluters.

From 1988 to 1997, the reported amount of chemicals being emitted into the air from industrial facilities fell by **45%**, thanks in large part to the spotlight which TRI has put on these emissions.



TRI Chemical Releases to Air

[back](#)

[home](#)

[quit](#)

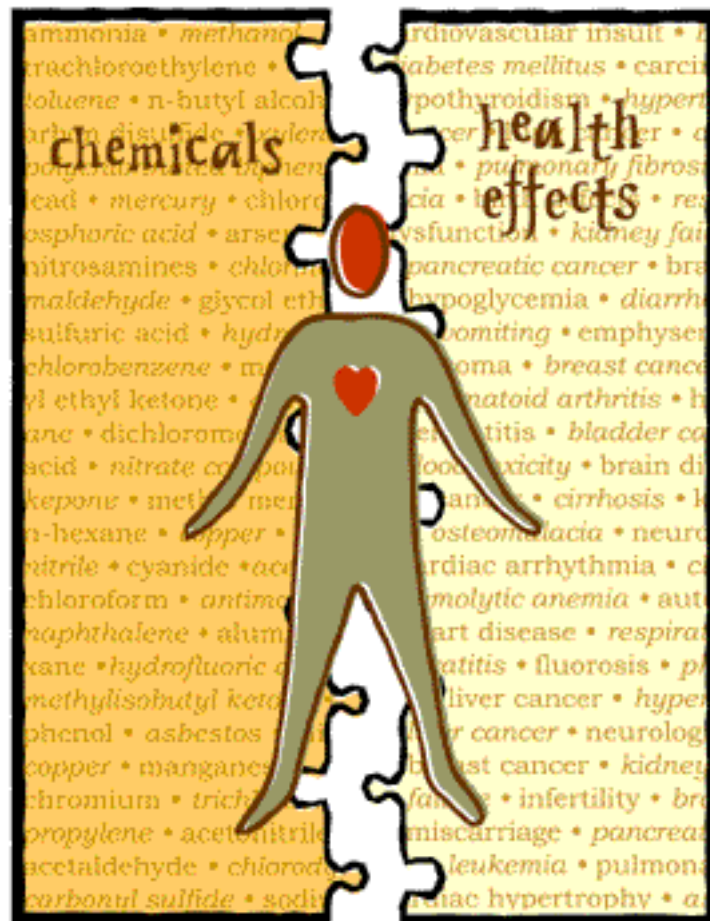
[next](#)

your right to know:

Toxics Release Inventory

Scorecard

With Scorecard, these facts are made more powerful by *showing the potential health effects of the chemicals being released*, and by highlighting what is *not* known about the safety of those chemicals that are being released in your neighborhood.



your right to know:

Toxics Release Inventory

Scorecard

The focus of this guide is on chemical releases from the manufacturers listed in the Toxics Release Inventory. Scorecard also has information on health risks from *toxic chemicals in the air, measured amounts of pollutants in the air, emissions from other sources like vehicles and electric utilities, farm animal waste* and more. Keep in mind that there are other sources of pollution in your area as well.



[back](#)

[home](#)

[quit](#)

[next](#)

your right to know:

Toxics Release Inventory

Scorecard

By using Scorecard to spotlight the toxic pollutants companies contribute to the environment, you can help *motivate* industries to perform better and *drive pollution trends down*.

We hope that, with the facts in hand, more citizens will call for reductions in toxic pollution and for improving local environmental conditions.



[back](#)

[home](#)

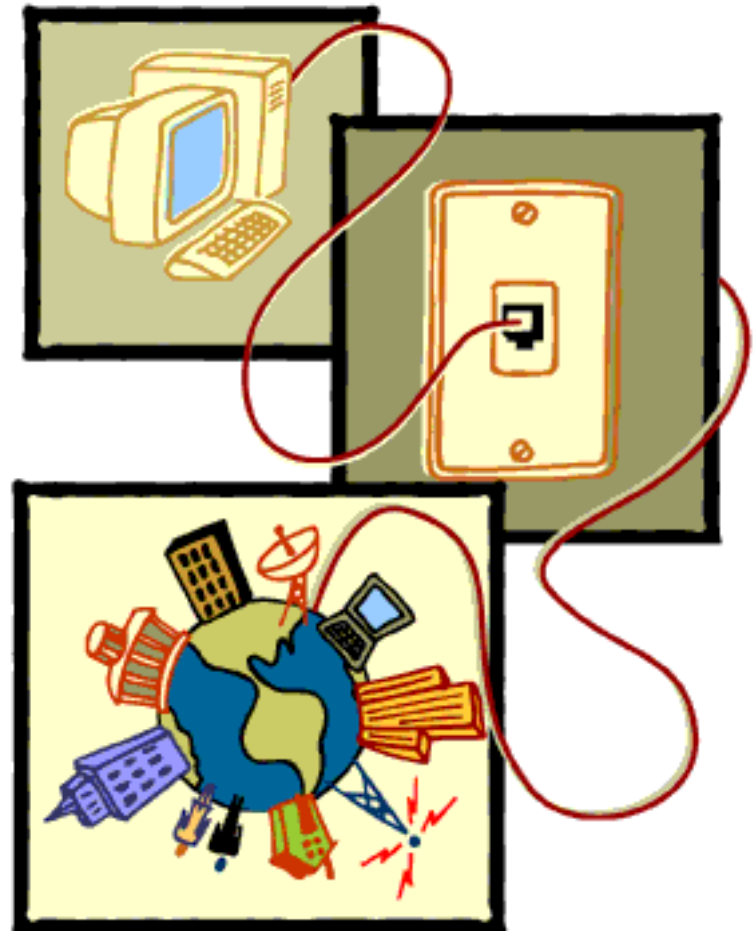
[quit](#)

[next](#)

accessing Scorecard

Scorecard

To access Scorecard at www.scorecard.org, you need to use the *Internet*. Free Internet access is often available at your local library, school or college, and at many places of business. You can also buy home access to the Internet if you have a computer and a modem.

[back](#)[home](#)[quit](#)[next](#)

Scorecard is built in layers. Information in more detail is always just a click away. Any time you want to see more information or learn more about a word or topic, click on any *underlined word* itself, or the *title* of a section.

Your Zip Code: 90001
Your Community: [LOS ANGELES County](#)

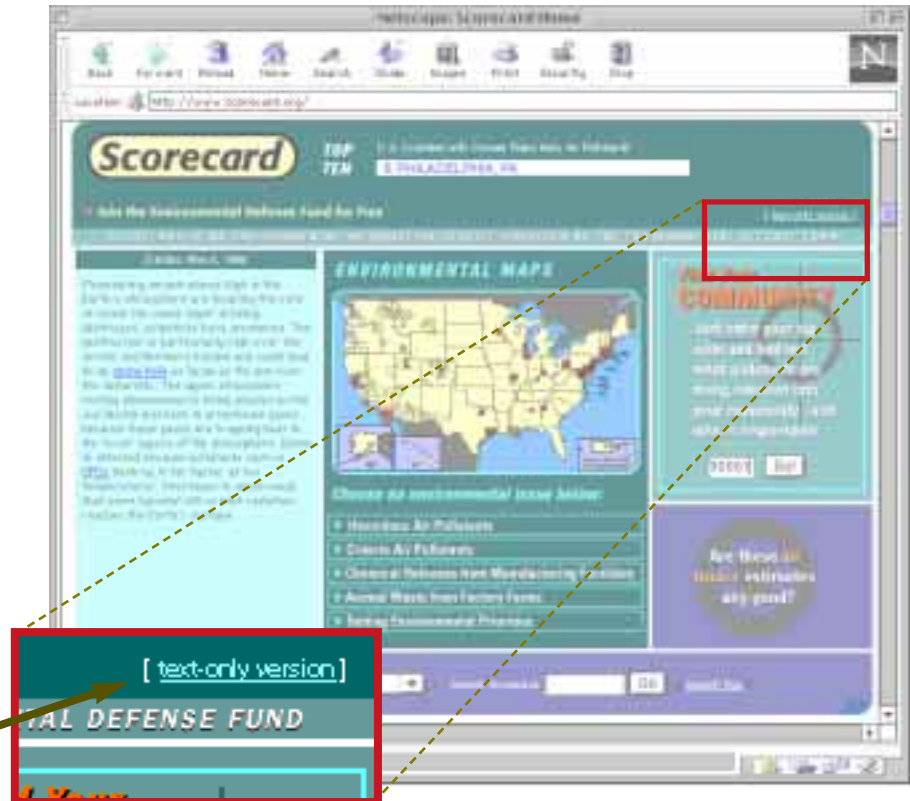
What Are the Major Pollutants?
Reported Environmental Releases from TRI Sources in 1997

Rank	Chemical Name	Pounds
1	AMMONIA	2,253,988
2	FORMIC ACID	1,200,000
3	METHANOL	827,021
4	PHOSPHORIC ACID	651,269
5	TETRACHLOROETHYLENE	507,811
6	STYRENE	500,071

accessing Scorecard



The Scorecard web site can be viewed faster without graphics. You should use the *“text-only” mode* if you are using an old browser, a slow Internet connection, or a slow modem (28.8 or slower).

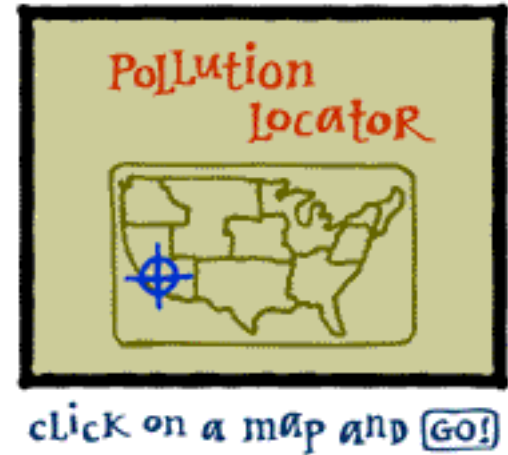


Click here to change to text-only mode

accessing Scorecard

Scorecard

Scorecard offers you many ways to get information about local industrial pollution. This guide provides an overview of two key paths: the *Community Center* and the *Pollution Locator*.



back

home

quit

next

get started! about your community



The *Community Center* is the quickest and easiest place to find specific information about industrial pollution in your area, so we'll begin there.

Starting from the Scorecard Home Page, find the box that says *Find Your Community*.

Enter your zip code and click on Go!

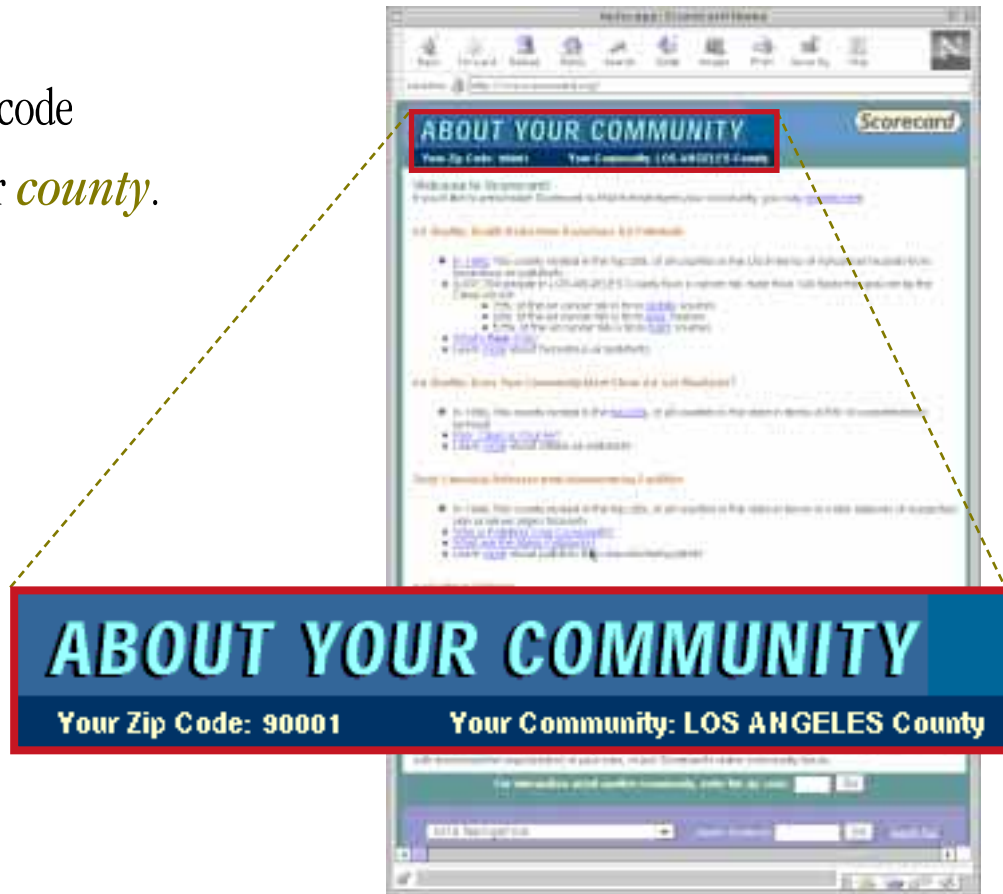


get started!
about your community



Notice that typing in your zip code takes you to a report for your *county*.

This is because information about most environmental problems is collected at this level of government.



get started! about your community



Each section of the Community page gives you information on a different type of pollution. For this tutorial we will focus on the section *Toxic Chemical Releases from Manufacturing Facilities*.



Toxic Chemical Releases from Manufacturing Facilities

- In 1997, this county ranked among the worst 20% of all counties in the US in terms of air releases of recognized carcinogens
- [Who is Polluting Your Community?](#)
- [What are the Major Pollutants?](#)
- Learn [more](#) about pollution from manufacturing plants in your community

get started! about your community



The link *Who is Polluting in Your Community* goes to a list of who is reporting the largest releases of chemicals into your community. Remember, these are only the large factories listed under TRI. For example, in Los Angeles County, Filtrol Corp. ranks number 1 in total environmental releases from TRI facilities.

Who is Polluting Your Community?
Facilities Reporting Releases from TRI Facilities (lb)

Rank	Facility	City	Pounds
1	FILTRAL CORP.	LOS ANGELES	1,340,025
2	CHEVRON USA PRODS. CO.	EL SEGUNDO	1,149,573
3	AGRIUM INC.	LABRADOR	786,900
4	MORGAN	VENICE	700,000
5	DICK CORP.	LONG BEACH	665,000

get started!

about your community



The *What Are the Major Pollutants* link goes to a list of chemicals being released in your community and in what quantities.

In Los Angeles County, Ammonia is the number one chemical being released to the environment from TRI facilities. Simply click on the chemical names for more information about these chemicals.

What Are the Major Pollutants?
Sorted Descending by Pounds from All Facilities in Area

Rank	Chemical Name	Pounds
1	AMMONIA	2,614,189
2	FORMIC ACID	1,460,000
3	METHANOL	1,403,673
4	SODIUM ACETATE	1,176,071
5	2,2,2-TRICHLOROETHANE	1,099,874
6	TRICHLOROETHYLENE	982,740
7	TOLUENE	913,008

get started! about your community



Back at your Community Center, the *Take Action* link gives you some suggestions about what you can do with this information *to help reduce toxic pollution in your community.*



get started! about your community

Scorecard

This page describes several action options to make your opinions heard. In addition to working with local environmental groups, there are also things you can do online! One of Scorecard's most popular tools is to *send a fax* to TRI facilities in your community.

Your Zip Code: 90001

Your Community: [LOS ANGELES County](#)

Take Action!

- [Send a FAX to the companies responsible for the top-ranked pollution problems in LOS ANGELES County](#)
- [Email EPA to take action to reduce air toxics risks](#)
- [Email state air quality officials to support controls on mobile source pollution](#)
- [Email EPA and USDA to strengthen their regulation of animal waste](#)

back

home

quit

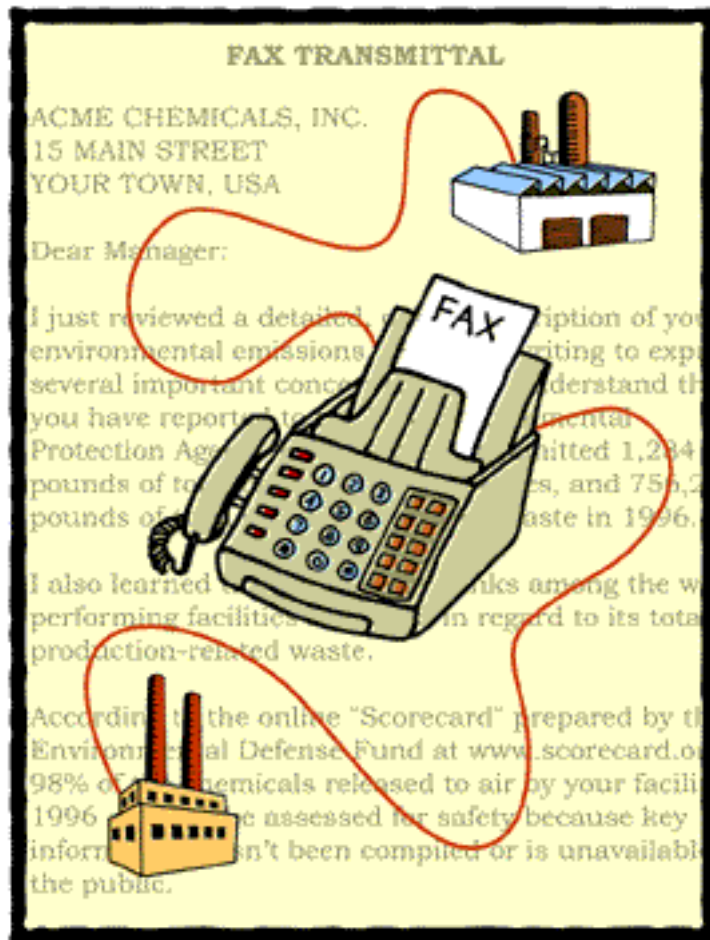
next

get started!

about your community

Scorecard

Find the particular facility you are concerned about, and EDF will fax the manager of the facility for you—*free!* Send the pre-drafted letter as is, or change it to focus on the questions important to you. For example, you can ask the facility to send you proof that its releases are safe, and what it is doing to help prevent toxic releases. To send a fax you will need to become a registered Scorecard user, so the facility will know who the letter is from.

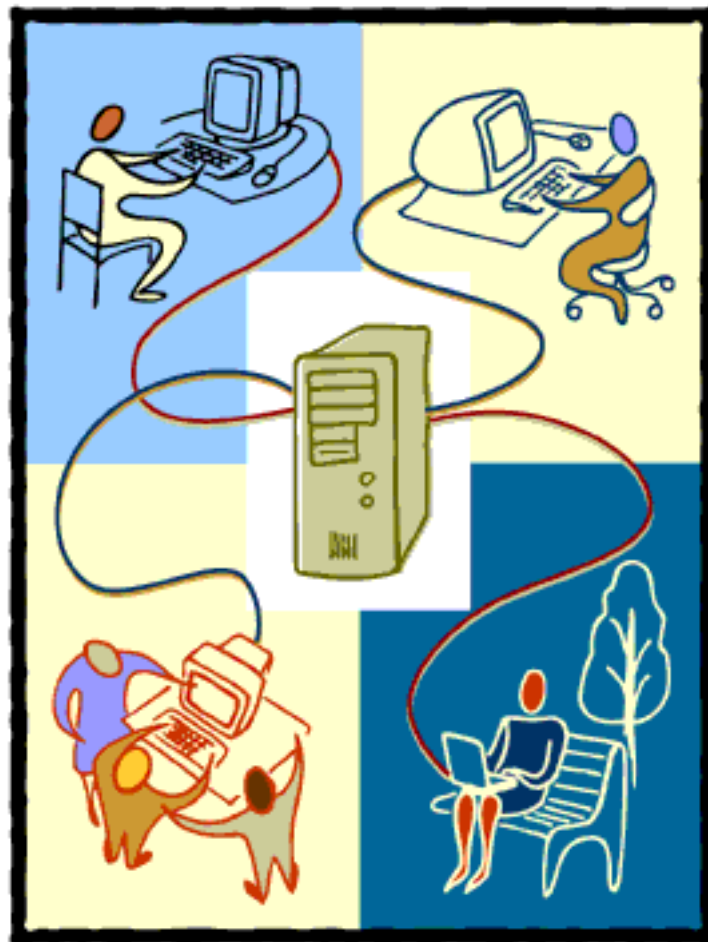


get started!

about your community

Scorecard

You can also start an *online discussion* with other people who have concerns about toxics, either in your community or anywhere else in the U.S. You can also find *other environmental groups* who are doing work in or around your community, find out about *Good Neighborhood Agreements* and other methods of pollution prevention, or help *support Scorecard*.



[back](#)

[home](#)

[quit](#)

[next](#)

using scorecard's maps: pollution locator

Scorecard

Another way to find local pollution information is to drill down to it using Scorecard's *maps*.

After selecting an environmental issue from the Scorecard Home page, you can choose any state on the map of the U.S. to view its *Environmental Release Report (ERR)*.

ENVIRONMENTAL MAPS



Choose an environmental issue below:

- ▶ Hazardous Air Pollutants
- ▶ Criteria Air Pollutants
- ▶ **Chemical Releases from Manufacturing Facilities**
- ▶ Animal Waste from Factory Farms
- ▶ Setting Environmental Priorities

[back](#)

[home](#)

[quit](#)

[next](#)

using scorecard's maps: pollution locator

Scorecard

By choosing the
*Map Locating
Toxic Chemical
Releases,*

• [Map Locating Toxic Chemical Releases](#)

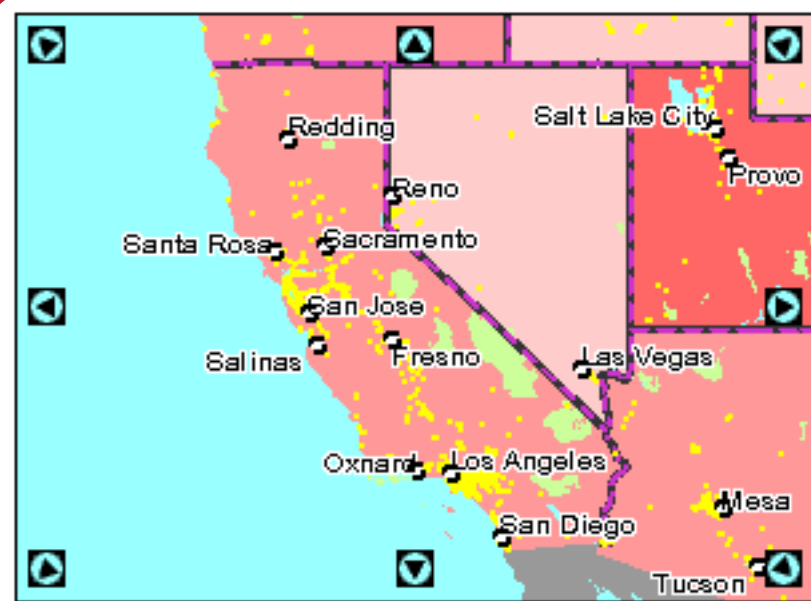
• [CALIFORNIA](#)

we then see a map
of California.

POLLUTION LOCATOR | Environmental Release Report

Environmental Release Report: CALIFORNIA

- [Map Locating Toxic Chemical Releases](#)
- [1997 Rankings: Major Chemical Releases or Waste Generation in CALIFORNIA](#)
- [1997 TRI Poll](#)
- [1997 TRI Poll](#)



back

home

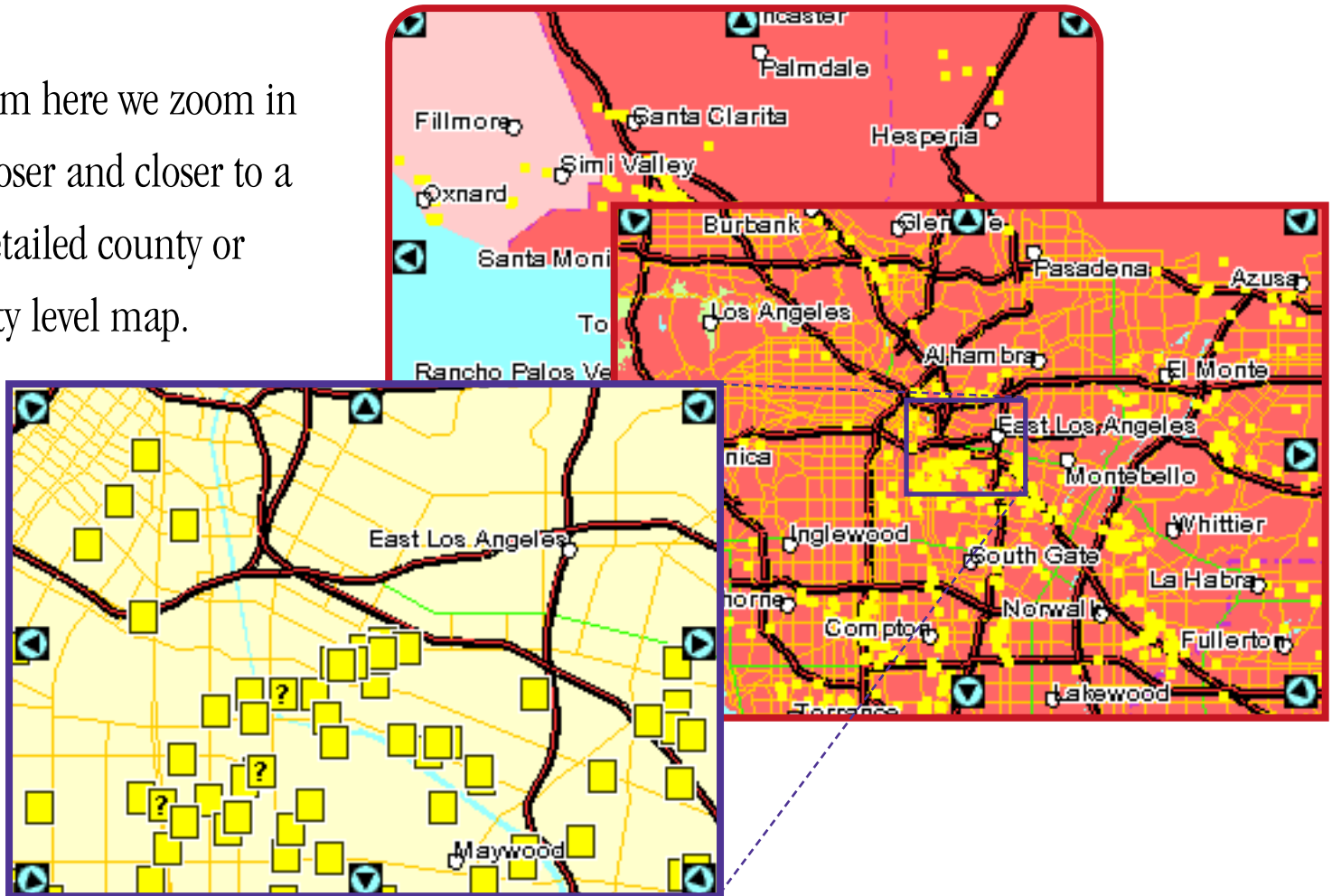
quit

next

using scorecard's maps: pollution locator

Scorecard

From here we zoom in in closer and closer to a detailed county or city level map.



[back](#)

[home](#)

[quit](#)

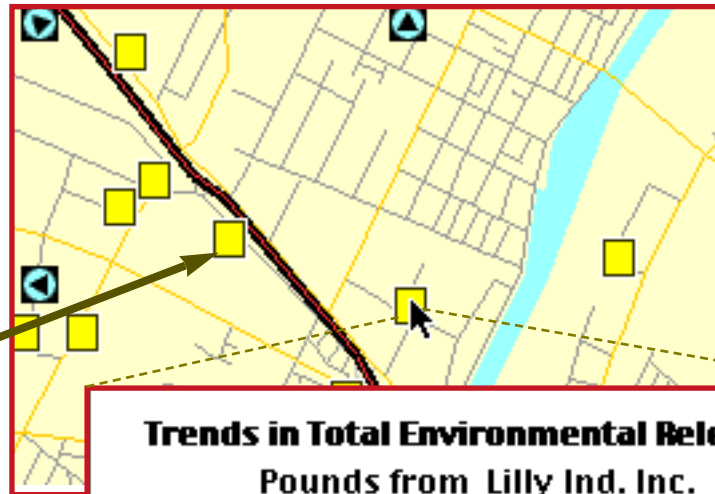
[next](#)

using scorecard's maps: pollution locator

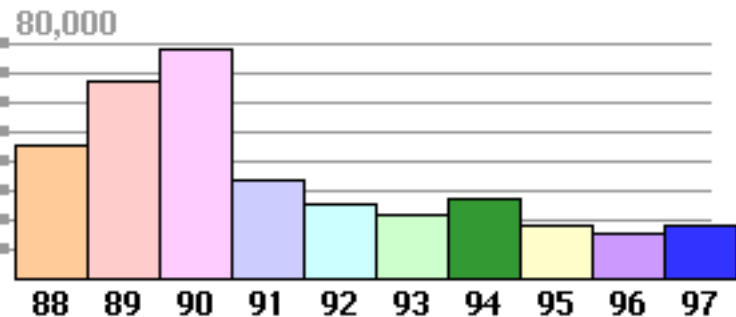
Scorecard

On the most close-up map, we can see streets and yellow boxes marking TRI facilities.

Each yellow box is a TRI facility



**Trends in Total Environmental Releases
Pounds from Lilly Ind. Inc.**



[back](#)

[home](#)

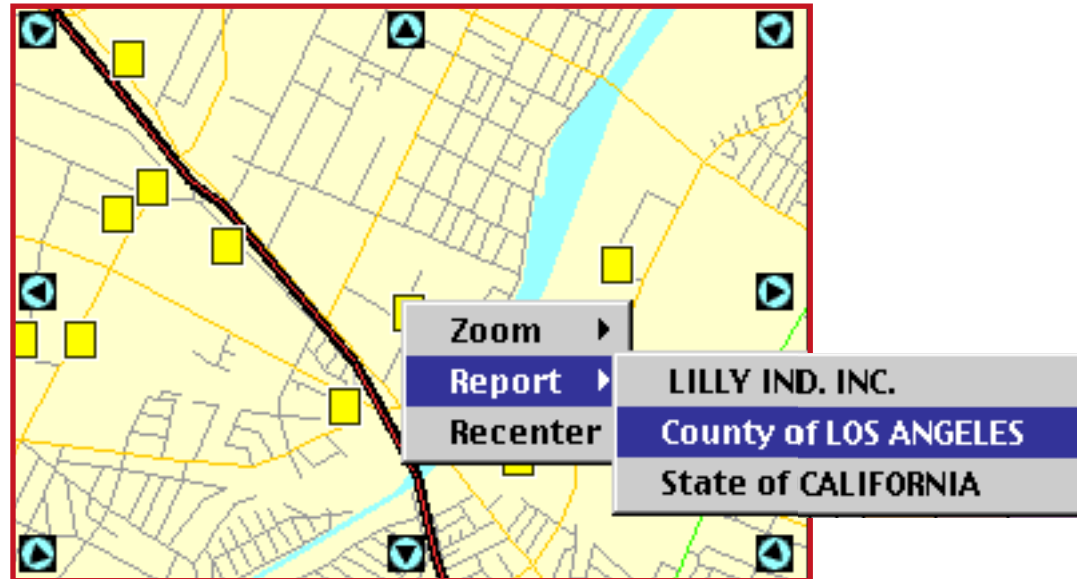
[quit](#)

[next](#)

using scorecard's maps: pollution locator

Scorecard

You can also view ERRs for the specific TRI facility or for the county or state in which it is located by making a selection from the *Report* pop-up menu.



[back](#)

[home](#)

[quit](#)

[next](#)

getting more detailed advanced reports

Scorecard Environmental Release Reports can answer more detailed questions you might have about toxics in your community. In this guide, we will describe briefly two of these sections: *Pollution Releases Sorted by Health Effect*, and *TRI Data Summary*.

Environmental Release Report: LOS ANGELES County

- [Map Locating Toxic Chemical Releases](#)
- [1997 Rankings: Major Chemical Releases or Waste Generation in ANGELES County](#)
- [1997 TRI Pollution Releases Ranked by Ozone Depleting Potential](#)
- [1997 TRI Pollution Releases Ranked by Potential Human Health Effect](#)
- [1997 TRI Pollution Releases Sorted by Health Effect](#)
- [What We Don't Know About Chemical Safety and Harm](#)
- [TRI Data Summary](#)
- [Take Action](#)
- [Links](#)

Notice that the *Take Action* features of Scorecard are also available in each individual report.

getting more detailed advanced reports

Scorecard

In the *TRI Pollution Releases Sorted by Health Effect* section you will find information about the kinds of health hazards posed by the chemicals that companies report they are releasing into your community.

• [1997 TRI Pollution Releases Sorted by Health Effect*](#)

	<u>Air Releases</u> <u>(Pounds from TRI sources)</u>
<u>Recognized Carcinogens</u>	892,339
<u>Suspected Carcinogens</u>	641,486
<u>Suspected Cardiovascular or Blood Toxicants</u>	5,648,354
<u>Recognized Developmental Toxicants</u>	469,375
<u>Suspected Developmental Toxicants</u>	4,090,576
<u>Suspected Endocrine Toxicants</u>	722,896
<u>Suspected Immunotoxicants</u>	892,628
<u>Suspected Kidney Toxicants</u>	4,268,687
<u>Suspected Gastrointestinal or Liver Toxicants</u>	8,164,978
<u>Suspected Musculoskeletal Toxicants</u>	11,671
<u>Suspected Neurotoxicants</u>	9,005,884
<u>Recognized Reproductive Toxicants</u>	32,892
<u>Suspected Reproductive Toxicants</u>	3,104,721
<u>Suspected Respiratory Toxicants</u>	8,447,119

[back](#)

[home](#)

[quit](#)

[next](#)

getting more detailed advanced reports

Scorecard

For releases of toxic chemicals in your area, you can see how much, from each facility, is composed of chemicals that are recognized to cause cancer, or that are suspected of being toxic to the brain and nervous system, or that fall into the other *categories of specific health hazards*. For example, in zip code 90001, a total of 892,339 pounds of recognized carcinogens were released by industrial facilities. Clicking on the number of pounds...

• 1997 TRI Pollution Releases Sorted by Health Effect*

	<u>Air Releases</u> <u>(Pounds from TRI sources)</u>
<u>Recognized Carcinogens</u>	<u>892,339</u>
<u>Suspected Carcinogens</u>	<u>641,486</u>
<u>Suspected Cardiovascular or Blood Toxicants</u>	<u>5,648,354</u>
<u>Recognized Developmental Toxicants</u>	<u>469,375</u>
<u>Suspected Developmental Toxicants</u>	<u>4,090,576</u>
<u>Suspected Endocrine Toxicants</u>	<u>788,888</u>

back

home

quit

next

getting more detailed advanced reports

...we find that
Tetrachloroethylene
was the carcinogen
released in the largest
quantity.

Remember: as always,
just click on underlined
words to find out more.

POLLUTER LOCATOR | Air Releases of Recognized Carcinogens

County: LOS ANGELES

- From 1988 to 1997, releases of recognized carcinogens to air have decreased 88%
- List facilities releasing recognized carcinogens to air in LOS ANGELES County.

Chemical Name	<u>Air Releases (Pounds from TRI Sources)</u>	<u>Regulated as a Hazardous Air Pollutant by the Clean Air Act</u>
<u>TETRACHLOROETHYLENE</u>	507,811	yes
<u>DICHLOROMETHANE</u>	182,736	yes
<u>CHLOROETHANE</u>	122,000	yes
<u>FORMALDEHYDE</u>	27,181	yes

getting more detailed advanced reports

Scorecard

Returning to our Environmental Release Report for zip code 90001, let's explore the *TRI Data Summary*. Here you can find out how many pounds of TRI chemicals have been released in your community since 1988.

Environmental Release Report: LOS ANGELES County

- [Map Locating Toxic Chemical Releases](#)
- [1997 Rankings: Major Chemical Releases or Waste Generation in LOS ANGELES County](#)
- [1997 TRI Pollution Releases Ranked by Ozone Depleting Potential](#)
- [1997 TRI Pollution Releases Ranked by Potential Human Health Risk](#)
- [1997 TRI Pollution Releases Sorted by Health Effect](#)
- [What We Don't Know About Chemical Safety and Harm](#)
- [TRI Data Summary](#)
- [Take Action](#)

back

home

quit

next

getting more detailed advanced reports

In this section, Scorecard displays the pounds of TRI chemicals that have been released into the air, water, underground, land, or transferred into or through your community. Clicking on the number at the bottom of the column will give an ordered list of the chemicals contributing to that amount.

• [TRI Data Summary](#)

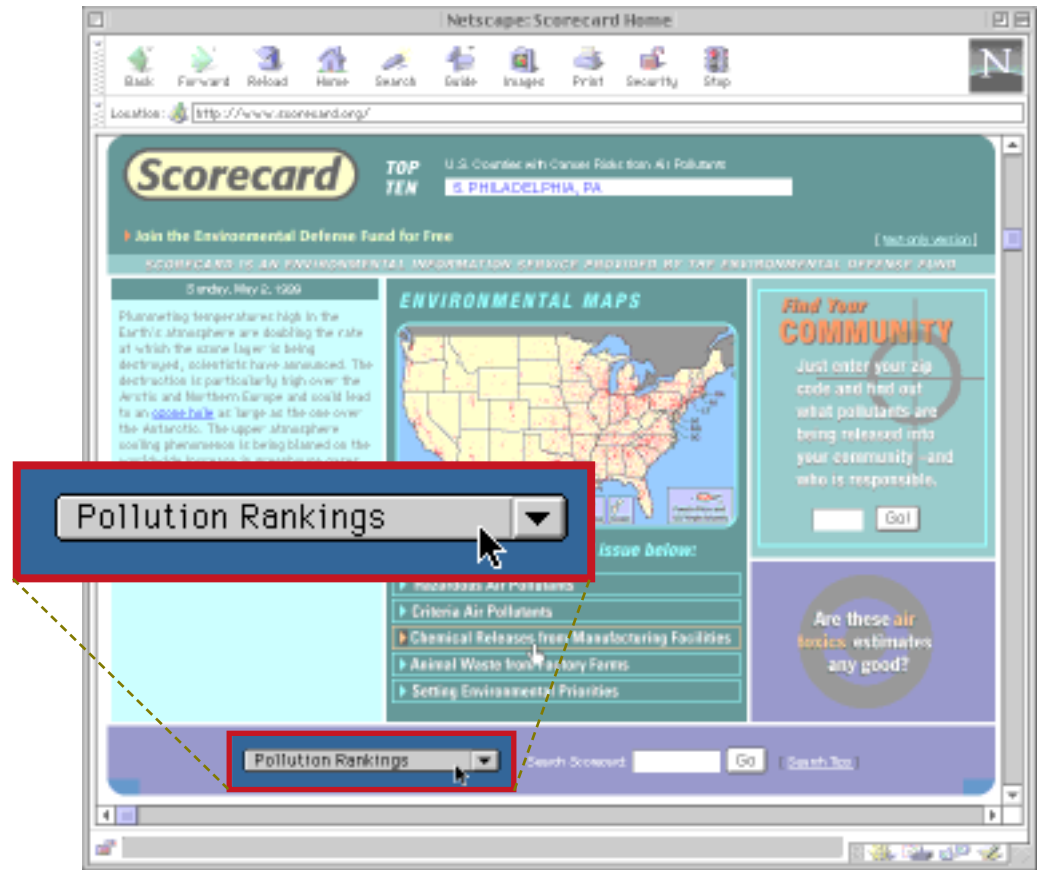
Environmental Releases, Transfers, and Production-Related Waste (Pounds)

Year	Air Releases	Water Releases	Land Releases	Underground Injection	Total Environ Re
1988	41,718,258	532,062	221,654	50,510	42,5
1989	38,095,895	189,307	46,024	260	38,3
1990	33,259,262	234,129	95,075	160	33,5
1991	27,172,297	124,623	89,907	0	27,3
1992	21,026,790	159,893	21,158	0	21,2
1993	16,397,748	201,411	72,563	750	16,6
1994	12,538,674	206,306	4,817	0	12,7
1995	11,495,995	229,068	8,290	0	11,7
1996	12,124,563	1,144,279	120,126	0	13,3
1997	9,793,660	294,495	250,687	0	10,3

compare your community's pollution ranking



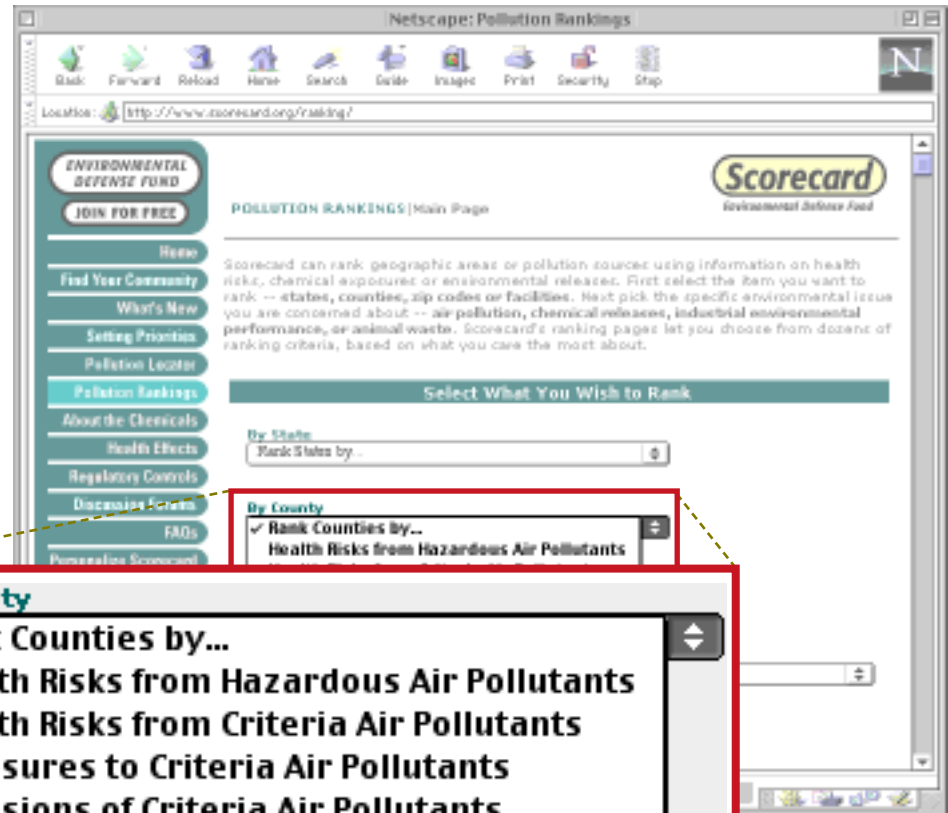
Although Scorecard cannot tell you what the health risk is for you, in your community, from TRI chemical releases, the *Pollution Rankings* can give you an idea of how your community compares to others.



compare your community's pollution ranking



Selecting “Emissions of Toxic Chemicals (TRI)” in the *Pollution Rankings* section allows you to compare, or rank, your community’s zip code or county with others around the country.



By County

- ✓ Rank Counties by...
 - Health Risks from Hazardous Air Pollutants
 - Health Risks from Criteria Air Pollutants
 - Exposures to Criteria Air Pollutants
 - Emissions of Criteria Air Pollutants
 - Emissions of Toxic Chemicals (TRI)**
 - Animal Waste from Factory Farms

compare your community's pollution ranking

Scorecard

Notice that we can rank the facilities or areas—like counties or states—against each other by any one of Scorecard's 40 different ranking categories. Just pull down the *Ranked by* menu to choose what you want.

Counties with Reported Releases of TRI Chemicals to the Environment

Ranked by (select your ranking criteria)

Total environmental releases

in

Entire United States [\(explain\)](#)

- ✓ Total environmental releases
- Air releases
- Water releases
- Land releases
- Underground injection
- Total off-site transfers
- Total production-related waste
- Ozone depleting potential
- Cancer risk score
- Noncancer risk score
- Recognized carcinogens to air

Click and hold here to see the pop-up menu

back

home

quit

next

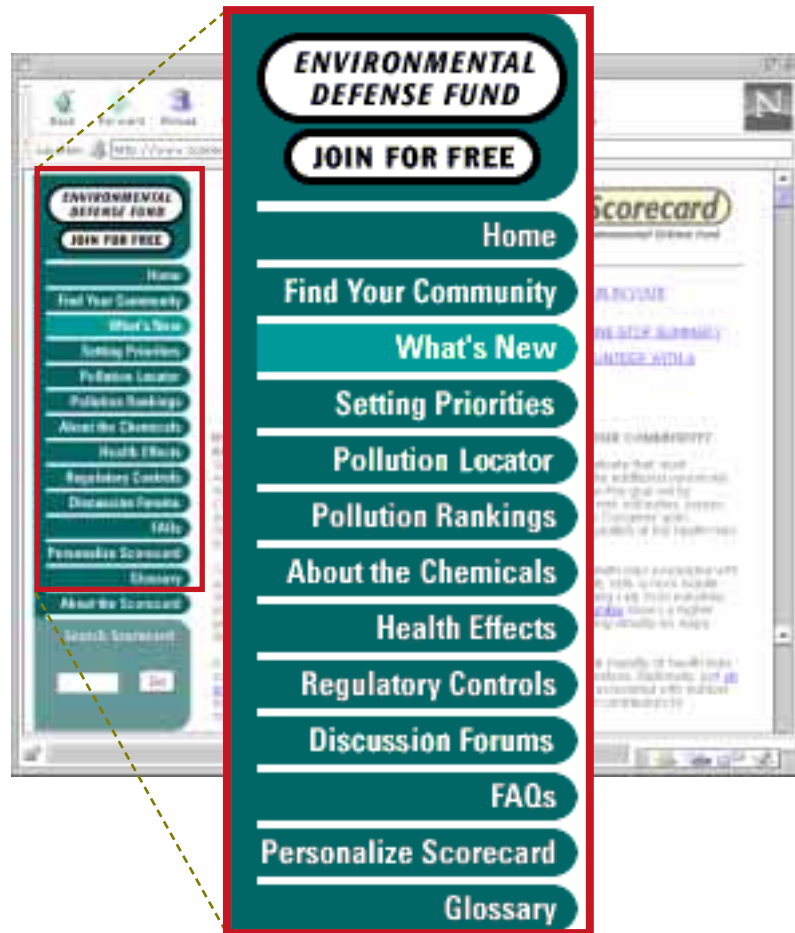
get involved!

organize your community

Scorecard

We hope that you will explore other information in Scorecard, such as *Health Effects* and the *Discussion Forum*.

We also hope you will consider *putting Scorecard to work in your community* by making Scorecard a part of a neighborhood meeting on toxics.



back

home

quit

next

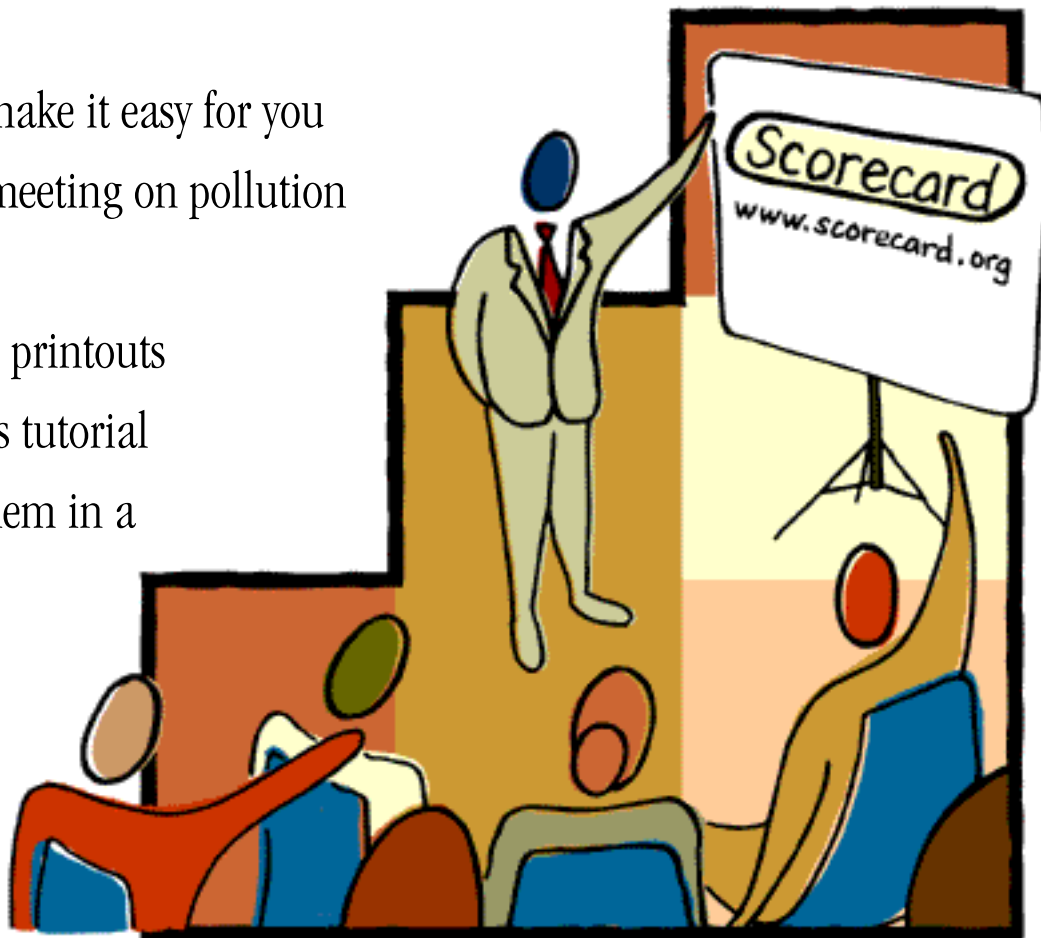
get involved!

Scorecard

organize your community

This tutorial is designed to make it easy for you to organize a community meeting on pollution from toxic chemicals.

We encourage you to make printouts or overhead slides from this tutorial and the web site and use them in a 20-30 minute presentation to inform others about Scorecard.



[back](#)

[home](#)

[quit](#)

[next](#)

get involved!

organize your community

Scorecard

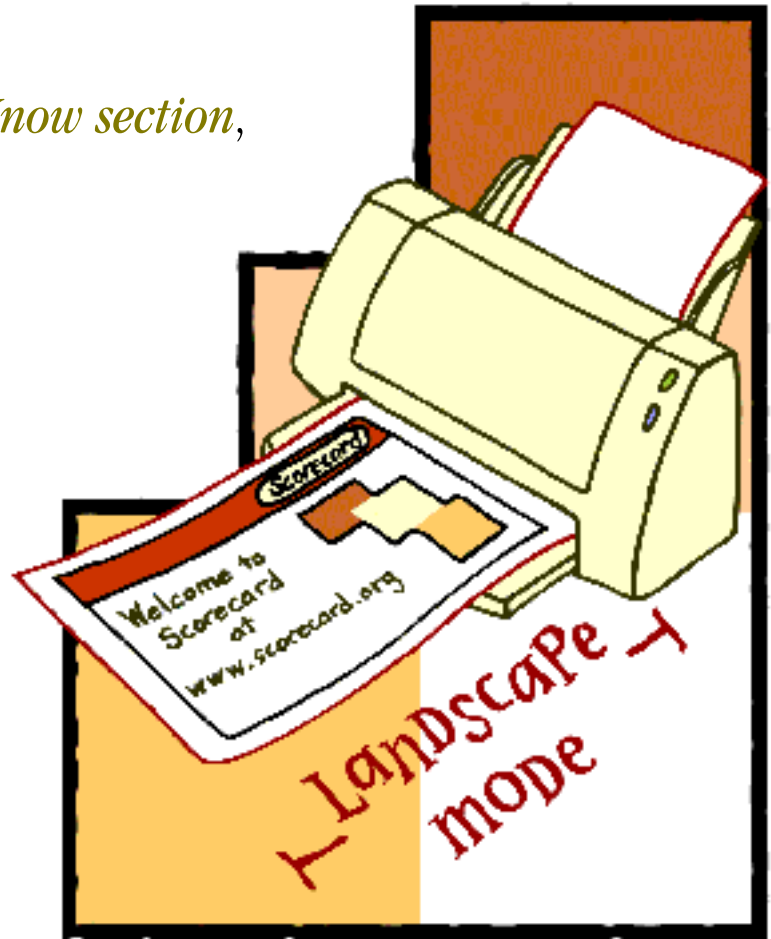
From this tutorial, print out the *Right to Know section*, following these instructions.

1. Make sure your page setup is correct.
These pages fit on a letter-sized sheet when printed horizontally (landscape).

Check Page Setup Now

2. Select the number of copies you need and print pages 6 to 10.

Print Pages Now



[back](#)

[home](#)

[quit](#)

[next](#)

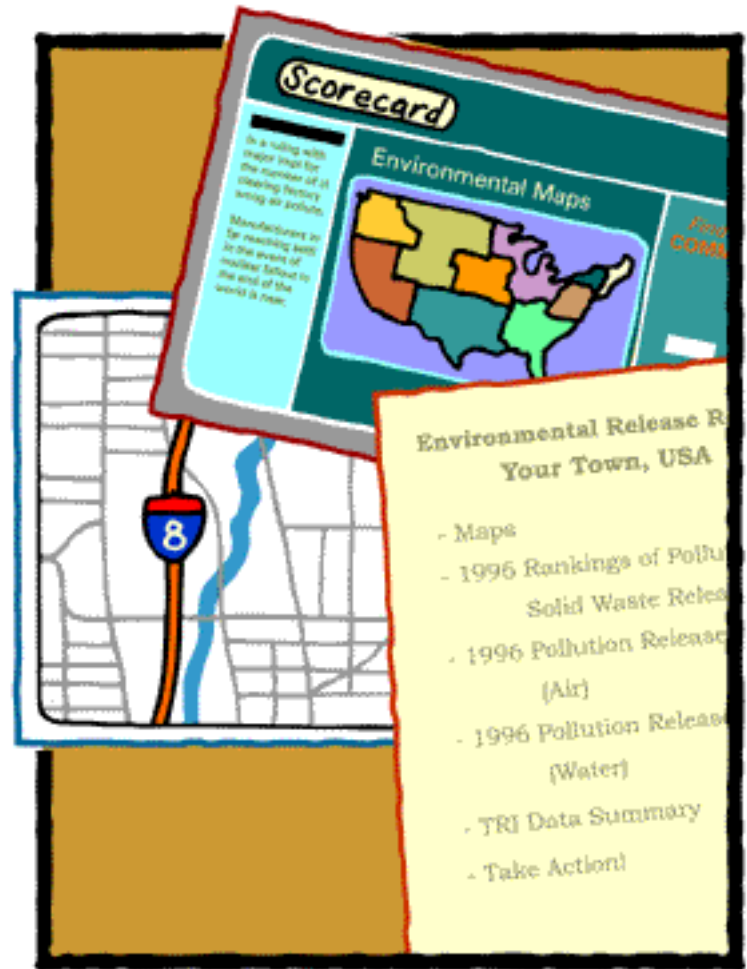
get involved!

organize your community

Scorecard

From the web site at www.scorecard.org, find and print out the following items:

1. The *Home page* of Scorecard
2. A *local level map* of your area, found using the Polluter Locator maps
3. *Your community's environmental release report* (or the report about a nearby industrial facility your group might be most concerned about)



back

home

quit

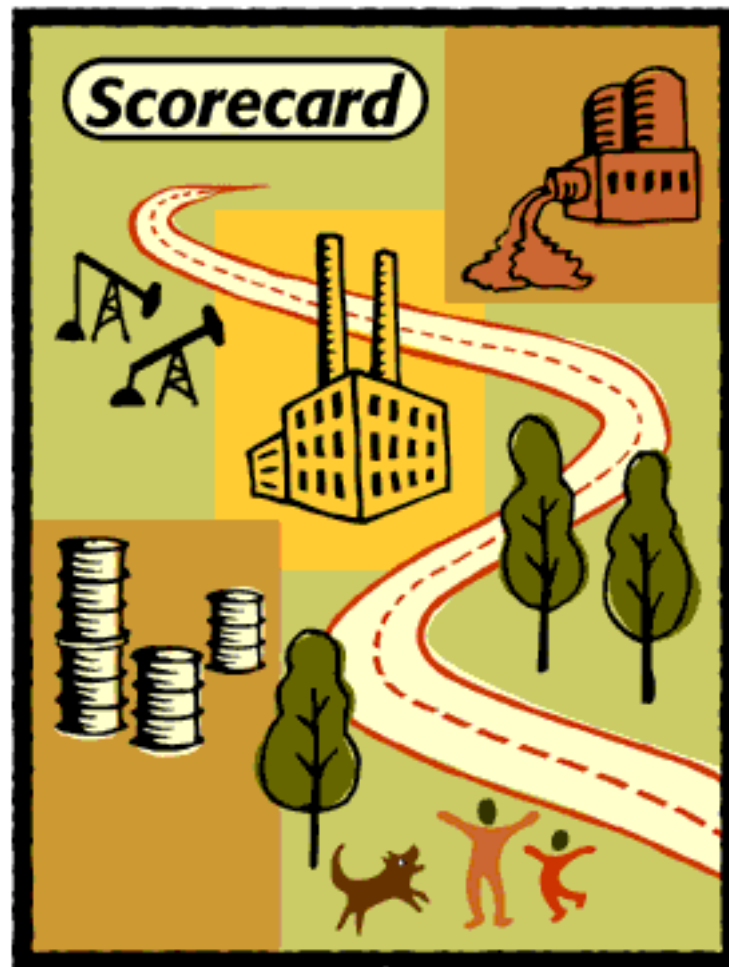
next

get involved!

organize your community

Scorecard

You now have powerful information—use it! Call the local newspaper and have them write a story, gather more information about pollution prevention, and work with your neighbors and other local groups to take charge of your environment. Remember, Scorecard is always adding more information. Please check back frequently to see *What's New*, and what's going on in your *Discussion Forum*.



[back](#)

[home](#)

[quit](#)

[next](#)

in closing
thanks for your support

Scorecard

This Tutorial is made possible by a grant from the Region 9 U.S. Environmental Protection Agency.

The EDF Scorecard is made possible by the generous financial support of the Clarence E. Heller Charitable Foundation of San Francisco, by The Joyce Foundation of Chicago, and by individual members of the Environmental Defense Fund.



We are actively seeking additional support to allow us to maintain and improve the Scorecard. If you'd like to help, please visit www.scorecard.org and follow the link to the *About Scorecard* section.

back

home

quit